

286 Croatia / Hrvatska / Kroatien

286/1140

Satellite Atlas of Croatia 1:100 000

Ljevak & Gisdata, I. Bertić, I. Lampek, Pavčnik & R. Radovinović (eds.), Zagreb 2001

360 pages, introduction, 205 images (15 of them 1:500 000), colour, overprint of names and communications, annex: geographical profile of Croatia and its regions, maps, illustrations, index, 22,5 x 30,5 cm, hardcover..

~~75,00 EUR~~
40,00 EUR

New price

Title ID: 31218

300 Asia / Asien

300/2360

Hydrogeological Map of Asia 1:8 000 000

GPH, H. Tang & al. (eds.), Sh. Jiao & al. (comps.), Beijing 1997

coloured tints, bathymetric tins 200-2000m, hydrology, groundwater types and water- abundance degrees, groundwater quality, very detailed, 2 inset maps (Hydrogeological Provinces; River Basins), 6 parts, total 150 x 150 cm, folded.

~~230,00 EUR~~
130,00 EUR

New price

Title ID: 30915

310 Southwest Asia / Vorderasien

310/3120

Atlas du monde islamique à l'époque classique

"IXe-Xe siècles"

Brill, G. Cornu, Leiden 1985-1985

20 regional sheets, 3 colour maps, contours, historical topography, scales and sizes vary, "Répertoire des toponymes", xv, 213 pages, 32 x 31 cm, in a slipcase

~~200,00 EUR~~
120,00 EUR

New price

Title ID: 30834

314 Jordan / Al-'Urdunn / Jordanien

314/1140

... / Space Atlas of Jordan 1:750 000

RJGC, Amman 2000

100 pages, colour, 50 satellite images with informations about the Location of the image: Topography, Geology, Agriculture and Vegetation, Urban features, image index, 2 language text (English, Arabic), 26 x 32 cm, softcover.

~~40,00 EUR~~

New price

20,00 EUR

Title ID: 29993

Excerpt from the Mineral Occurrence and Metallogenic Map of Oman 1:1 000 000 (see next page)

315 Israel & Palestine / Israel & Palästina

315/3120

The Atlas of Biblical Jerusalem

D. Bahat, Jerusalem 1994

47 pages, colour, numerous maps and figures and illustrations, contents: Foreword, The First Temple Period: 100BCE - 586 BCE, The Second Temple Period: 538 BCE - 70 CE, Jerusalem at the Time of Jesus, The Topography of the City, Index, 22 x 30 cm, softcover.

~~27,00 EUR~~
14,00 EUR

New price

Title ID: 29868

315/3210

Population Map - West Bank - October 2005 c. 1:230 000

Peace Now, Tel Aviv & Jerusalem 2003

colour, 7 sizes of Palestinian and Israeli settlements, tints for Areas A, B, C and built up areas of settlements, population table, notes, index with population graphs on reverse, 48 x 67 cm, folded.

~~21,00 EUR~~

New price

12,00 EUR

Title ID: 29936

319 Caucasasia / Kavkaz / Kaukasien

319/5210

Historic Maps of Armenia

"The Cartographic Heritage "

I. B. Tauris & Co., R. Galichian, New York 2004

232 pages, 127 map reprints (some with additional map extracts), contents: Historical note, A brief history of Armenian maps, Bibliography, Glossary of frequently used geographical names, List of maps, Maps and their descriptions, Index of names, 31,5 x 29 cm, hardcover

~~120,00 EUR~~

New price

80,00 EUR

Title ID: 71230

322 Yemen / اليمن / Al-Yaman / Jemen

322/1110

Al-jumhūriya al-'arabiya al-yamaniya / Yemen Arab Republic 1:500 000

SA, San'a' / Sanaa 1986

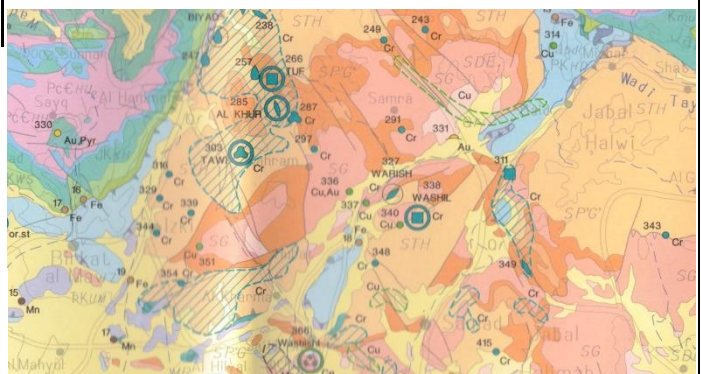
2 sheets (1, 2), 4 colours, contours 200 m, shading, hydrography, vegetation, places and roads classified, administrative boundaries, bilingual legend (English, Arabic), each 88 x 131 cm, folded.

~~100,00 EUR~~

New price

70,00 EUR

Title ID: 29304



323 Oman / عمان *Umān*

323/2380

Mineral Occurrence and Metallogenic Map of Oman 1:1 000 000

DGM, J.C. Michel (ed.), Muscat & Orléans 1993
colour, geological map with detailed mineral occurrences
overprint, 90 x 119 cm, folded; explanatory notes: 40 pages, 6
figures, 4 tables, softcover.

~~150,00 EUR~~

New price **90,00 EUR**

Title ID: 29287

323/2380

Mineral Deposits of the Mountains of Northern Oman 1:1 000 000

DGM, Muscat 1985
colour, geological tints, commodities, type and size,
42 x 29 cm, folded

~~30,00 EUR~~

New price **15,00 EUR**

Title ID: 29288

331 India / *Bhārat* / Indien

331/5210

Indian Cartography

"A Historical Perspective"

P.L. Madan, Manohar Publishers & Distributors, New Delhi
1997

144 pages, black & white, 23 maps, 8 tables, contents:
1. India and the Antiquity: 3000 BC to the End of BC Era, 2.
Early Centres of Cartography: Earliest Times to the End of BC
Era, 3. The Age of Reconnaissance : AD 1 to 1000, 4. The
Age of Adventure and Discovery : 1000 to 1600, 5. Age of
Romance : 1600 to 1800, 6. Modern Era : Nineteenth Century
to Mid-Twentieth Century, 7. Indigenous Maps, 22 x 28 cm,
hardcover.

~~85,00 EUR~~

New price **50,00 EUR**

Title ID: 38619

630 United States of America / Vereinigte Staaten von Amerika

630/5210

Atlas of Historical Maps of Maryland 1608 - 1908

The Maryland State Archives, E.C. Papenfuse and J.M. Calle
III, Baltimore & London 2003(1982 published as: "The
Hammond-Harwood House Atlas of Historical Maps of
Maryland, 1608 - 1908")

xi, 223 pages, colour, rich in illustrations, from the contents:
Preface, Exploration, Settlement to Colony, Charting the Way,
From Colony to State, In the New Nation, Growth and
Disunion, Enterprising Map Makers, Mapping Cities and
Towns, From Pragmatic Surveying to Scientific Cartography,
Last Frontiers, Notes, Index, 37,5 x 32,5 cm, hardcover, cloth
binding.

~~132,00 EUR~~

New price **80,00 EUR**

Title ID: 51072

672 Colombia / Kolumbien

672/2410

Suelos y Bosques de Colombia

IGAC, Bogotá 1988

xiii, 135 pages, 18 maps 1:3 400 000, colour, numerous
figures and colour illustrations, tables, from the contents:
Presentacion, Introduccion, Regiones Fisiograficas de
Colombia, Zonas de Vida, Suelos de Colombia, Regimenes
de temperatura de los Suelos (Actuales y Propuestos),
Bosques de Colombia, Materia Organica en los Suelos de
Colombia, Constitucion Mineralogica de la Fraccion Arena de
los Suelos de Colombia, Distribucion Geografica de los
Minerales de la Fraccion Arcilla (...), Spanish, 44 x 60 cm,
softcover.

~~70,00 EUR~~

New price **40,00 EUR**

Title ID: 47202

681 Brazil / Brasil / Brasilien

681/3240

Mapa etno-histórico do Brasil e regiões adjacentes 1:5 000 000

"Adaptado do mapa de Curt Nimuendaju 1944"

IBGE, Rio de Janeiro 2002

colour, 41 linguistic tints, hydrography, places, polyconic
projection, 97 x 104 cm, folded.; explanatory notes: 93 pages,
black & white, 20 x 26 cm., softcover,

~~53,00 EUR~~

New price **30,00 EUR**

Title ID: 62621

Excerpt from the legend of the Mapa etno-histórico do Brasil

1:5 000 000

FAMÍLIAS LINGÜÍSTICAS			
	Araucano		Maskoy
	Aruak		Matako
	Botocudo (Borun)		Múra
	Çapakura		Nambikwára
	Chaná		Otuké
	Chibcha		Pano
	Chiquito		Peba
	Enimagá		Puinave
	Gê		Purí
	Gahibo		Sáliva
	Guaykurú		Širianá

Excerpt from the Mapa etno-histórico do Brasil 1:5 000 000

